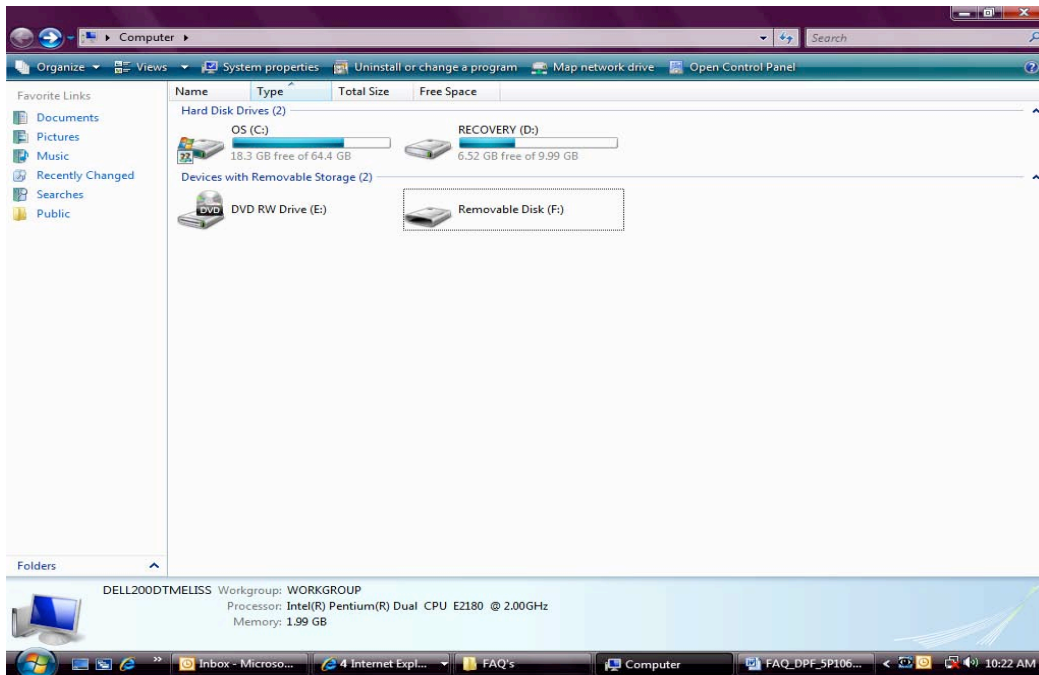


# INVION

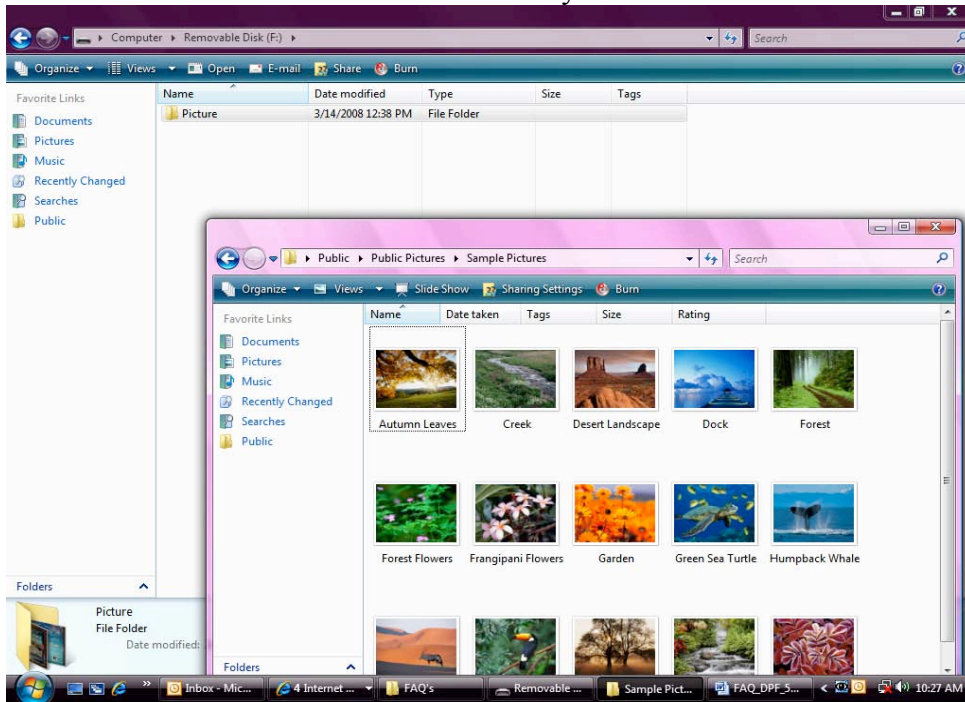
## Invion DPF-5P106 Frequently Asked Questions

Q: How do I put pictures on my memory card?

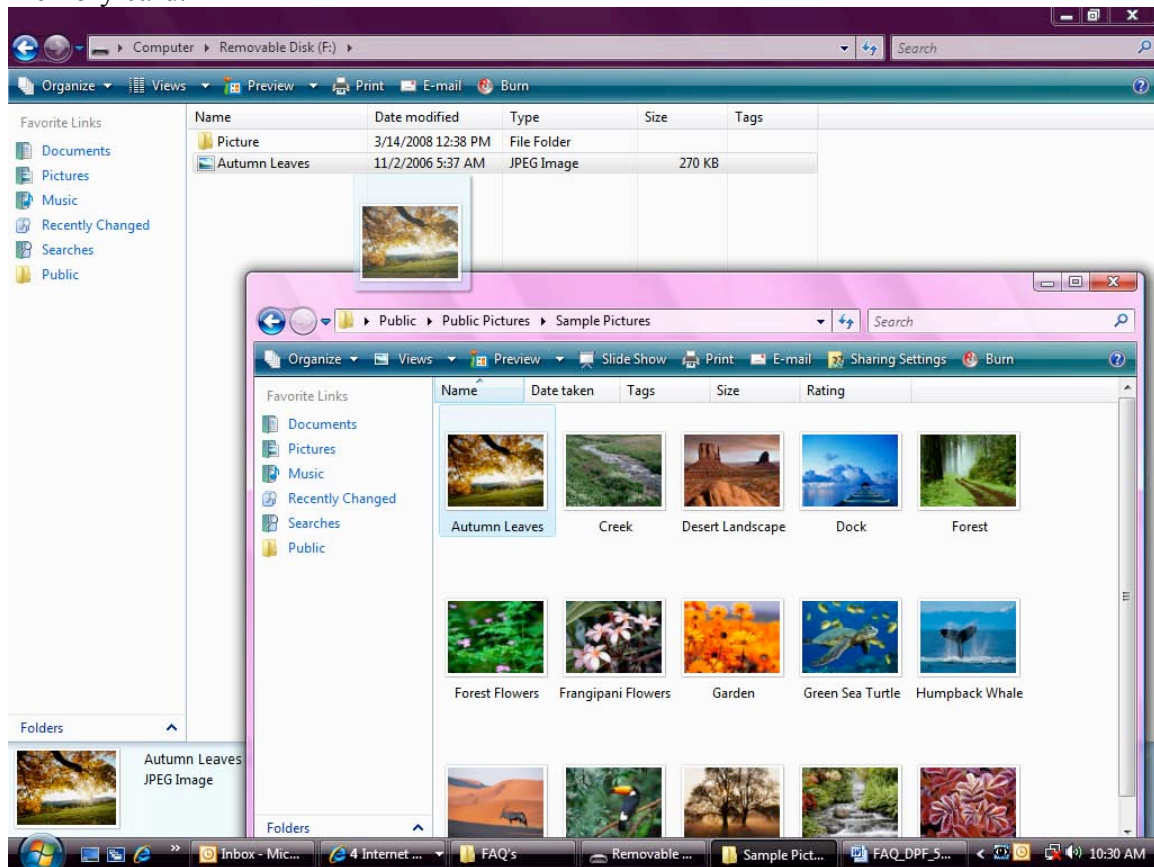
A: First you must put your memory card into a card reader and plug into your computer. Go to “my computer” and the memory card will come up as a “Removable Disk”.



Open the “Removable Disk” by double clicking. The go to “My Pictures” or wherever you store your photos on your computer. Minimize the “My Pictures” Screen so you can see both the “Removable Disk” and the “My Pictures” screens at the same time.



Then you highlight the desired picture and ‘drag and drop’ the pictures from the “My Pictures” folder to the “Removable Disk”. Your picture will copy to the “Removable Disk” folder. Repeat this process until you have copied all of your desired pictures to the memory card.

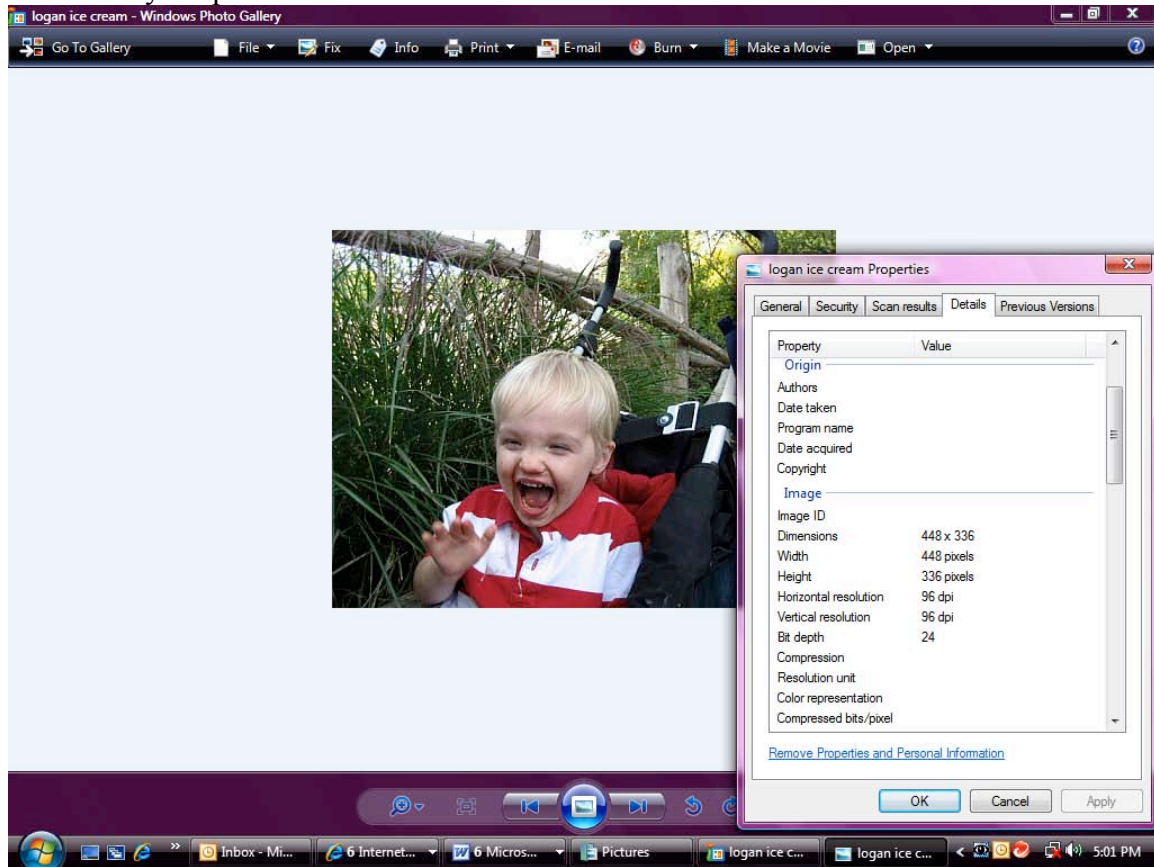


Q: Does the frame have internal memory?

A: No the digital picture frame does not include internal memory to store your photos. You must use a compatible memory card to view photos. Memory cards compatible with the frame include: SD, XD, MS/MS Pro, MMC

Q: Why do some of my pictures look better on the frame than others?

A: All pictures will display differently depending on how many Mega Pixels your camera has and the resolution of the photo. For example a picture taken with a 2 Mega Pixel camera will be of lesser quality than a picture taken with a 7 Mega Pixel camera. Pictures that are higher resolution and that have more dpi will display better on the frame. To check the resolution of your picture put the picture on your computer. Then open the picture. Then right click on the picture and choose 'Properties'. There you can find what resolution your picture has.



Q: One or more of my photos will not display on my photo frame; why?

A: The photos must be in JPEG format to display on the frame. Please check to be sure your photos are in JPEG format so you can view them on the frame. Many software applications will allow you to convert your images into JPEG format. Please refer to the software applications instructions for details on how to convert your photos.

Q: My picture frame won't power on.

A: Check to be sure the AC adapter is inserted fully in to the frame. If you plug your AC adapter into a "switched" wall outlet, make sure the switch is turned on.

Q: The thumbnails screen is blank/no photos on the memory card

A: Check to be sure your memory card is inserted properly (the label should face toward the front of the frame). Check to be sure you are using a supported memory card (SD, XD, MS/MS Pro, MMC)

Q: What is the maximum picture size I can display on the frame?

A: The digital picture frame displays images up to 10 Mega pixels

Q: Is this the frame touch screen?

A: No the LCD screen does not use "touch enabled" technology